

Our Commitment To You

We strive to provide you a high quality, accurate order delivered to you on time, every time.

We take pride in the reputation we've built by keeping within precise tolerances in expertly cut and bent parts.

From large-scale, mass-produced products to the weekend warrior; there's no job too big or small.

We offer precision parts in a variety of materials including, but not limited to steel, stainless, aluminum, brass, and copper.

Having been in business since 1994, we have acquired a team of professionals who take great pride in their work and the craft that makes our services and products a cut above the rest.

FREE DELIVERY AVAILABLE



**THE FRONT RANGE'S LEADING
SUPPLIER OF STEEL, ALUMINUM
& STAINLESS PRODUCTS**

No order too big or small!

Quality products and wide assortment of processing services

Family owned and veteran operated with great attention to detail and superior customer service



719-392-6821



**3350 Drennan Industrial Loop North
Colorado Springs, CO 80910**



westernsteelcs.com



custserv@westernsteelcs.com

**OPEN MONDAY-FRIDAY
7AM-4:30PM**

Services

Laser Cutting



MAZAK OPTIPLEX NEO-15KW

- 60" x 120" cutting envelope
 - thickness limit:
 - steel- 1 1/2"
 - aluminum- 1"
 - stainless steel- 1"
 - brass & copper- 1/2"

Plasma Cutting



MESSER MPC2000- 400amp HD

- 120" x 288" cutting envelope
 - Thickness limit:
 - steel- 2"
 - with oxyfuel torch- 8"
- Drills up to 2 1/2" holes through 4" plate
- Etches & pin stamp marking

Bending



ACCURPRESS- 250T HYDRAULIC

- 14' capacity @ 3/16" thick
- 2' capacity @ 3/4" thick
- Automated backstop

SAFAN DARLEY E 100-3100

- 10' capacity @ 11g thick
- 5 axis automated backstop

Shearing



ACCURPRESS- ACCUR SHEAR

- Shears 3/8" thick material up to 12' long

Sawing



HEM SAW WF130HA-DC-C/TS & VT100HLA-60

- Cuts up to 18" x 30" of material
- Miter capable up to 60°
- Automated measuring

Drilling/Tapping



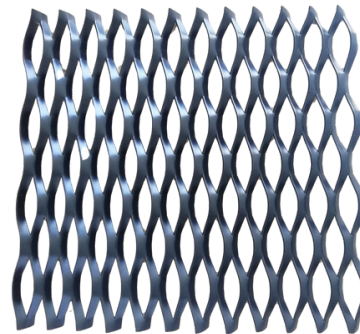
FLEXARM ELECTRIC TAPPING ARM RE-16/RE-24

- Material tapping up to 7/8" thickness
- Countersinking
- Drilling

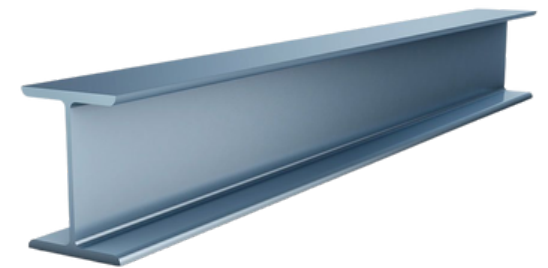
Products



- Angle iron*
- Beam*
 - I-Beam & W-Beam
- Sheet and Plate*
 - HR, CR, P&O, AR 400/500, A572, & more
- Round Tube*
- Square Tube*
- Rectangle Tube*
- Flat Bar*
- Round Bar*
- Square Bar*
- Channel*
- Expanded Metal*
- Floor Plate*
- Welded Wire
- Rebar
- Bar Grating
- Decking & Corrugated Sheet
- Hinges
 - Barrel, Butt & Continuous
- Caprail
- DOM Tubing
- Nelson Studs
- Brackets & Base Plates
- Pipe & Tube Caps
- Elbows



GIVE US A CALL FOR MORE OPTIONS



*available in steel, aluminum & stainless